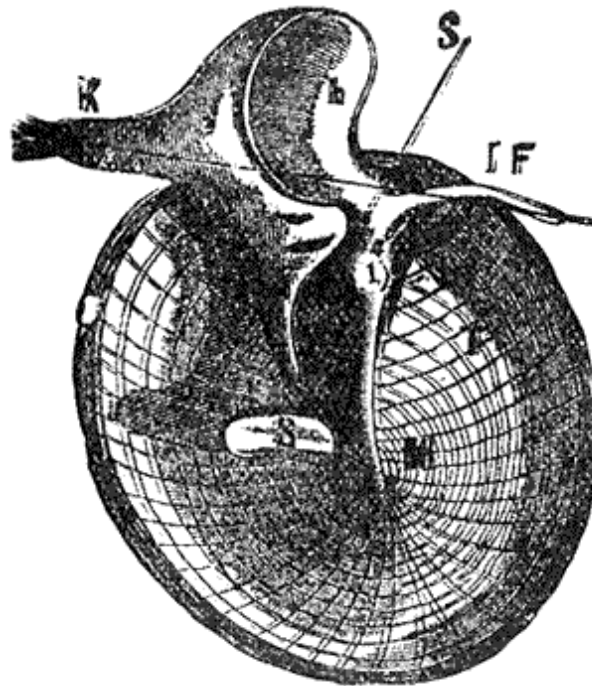


G23A: Middle Ear

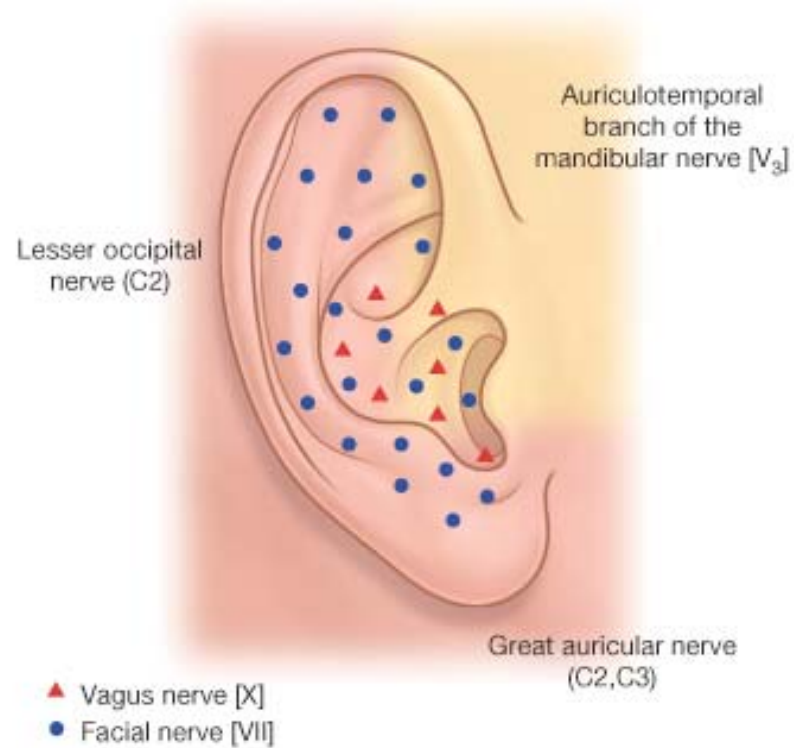


Syllabus - Pg. 84

External Ear



External Ear



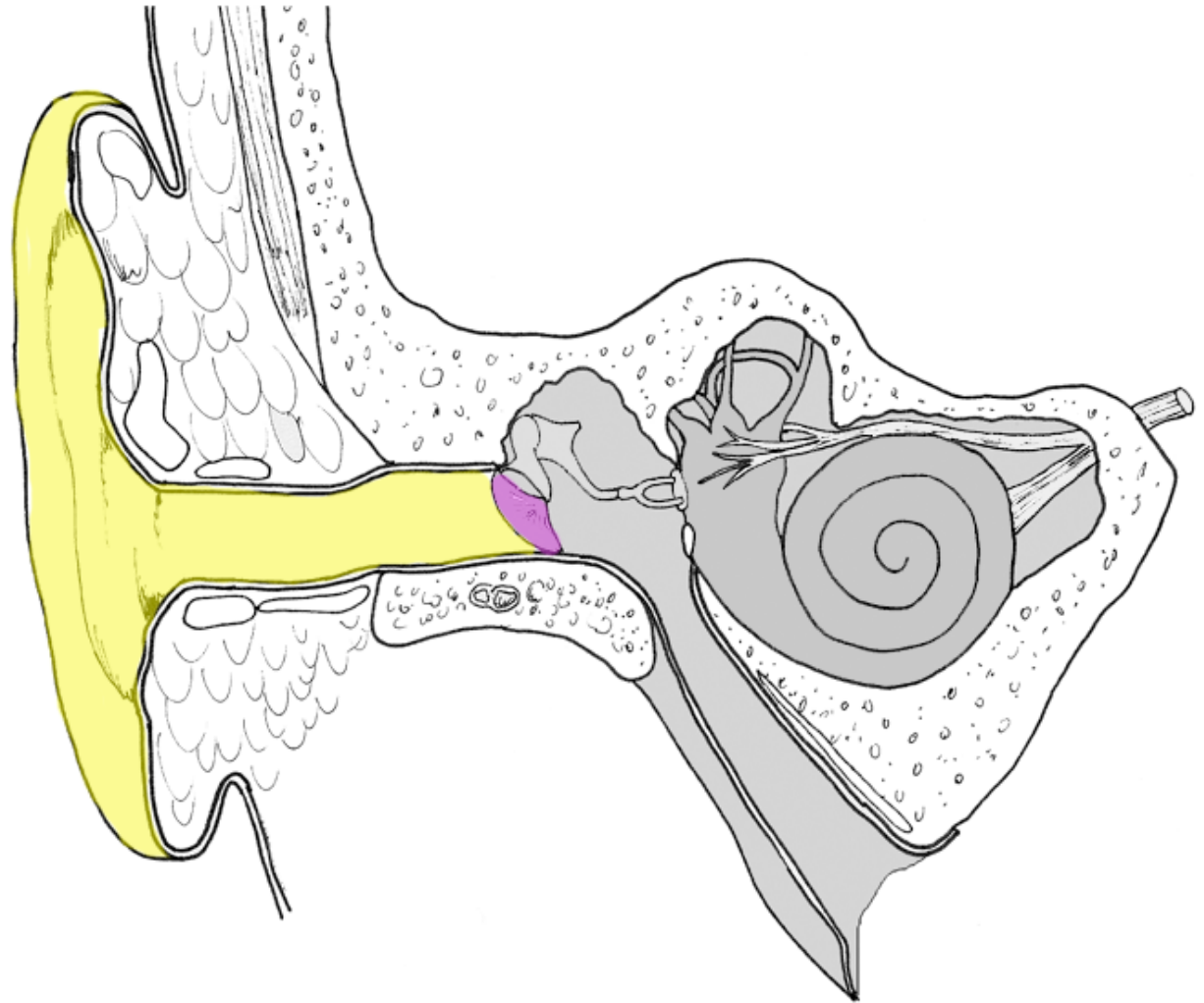
GAFS Fig. 8.278

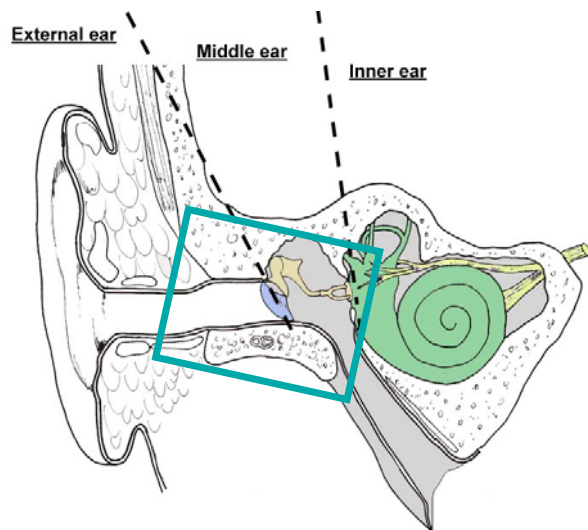
External Ear

Auricle

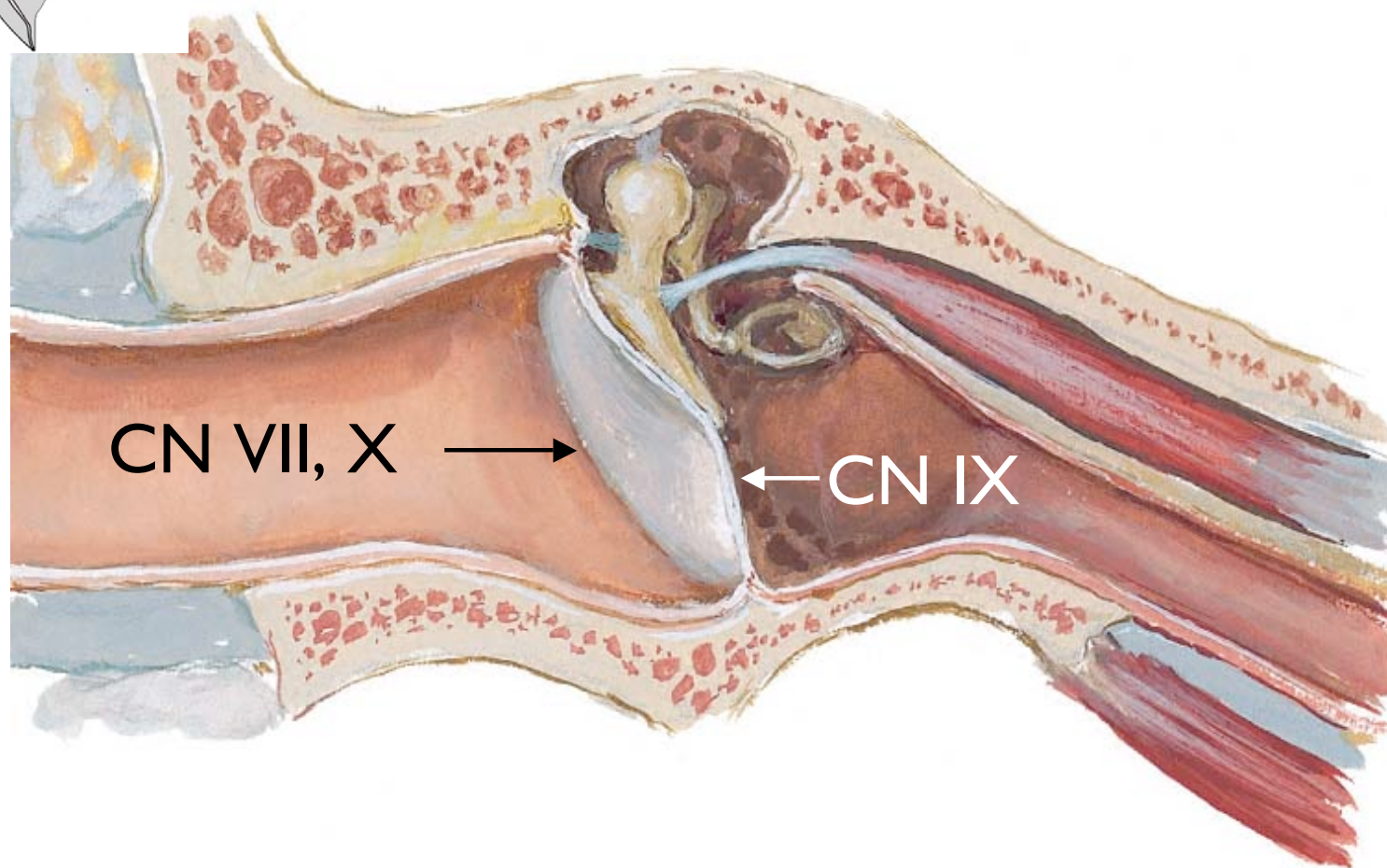
External auditory canal

Tympanic membrane





External Ear and Tympanic Cavity Coronal Oblique Section

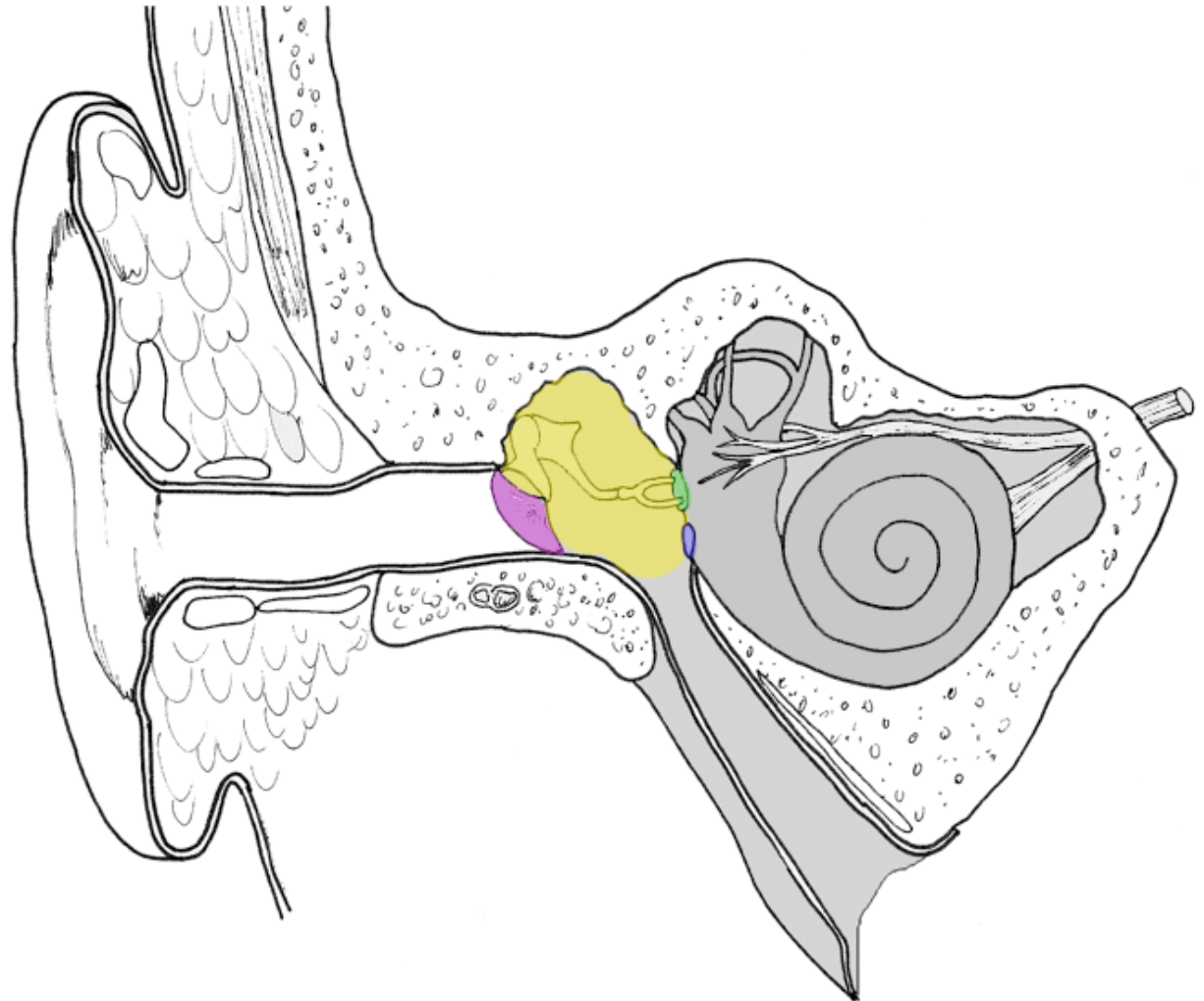


Middle Ear

Tympanic membrane

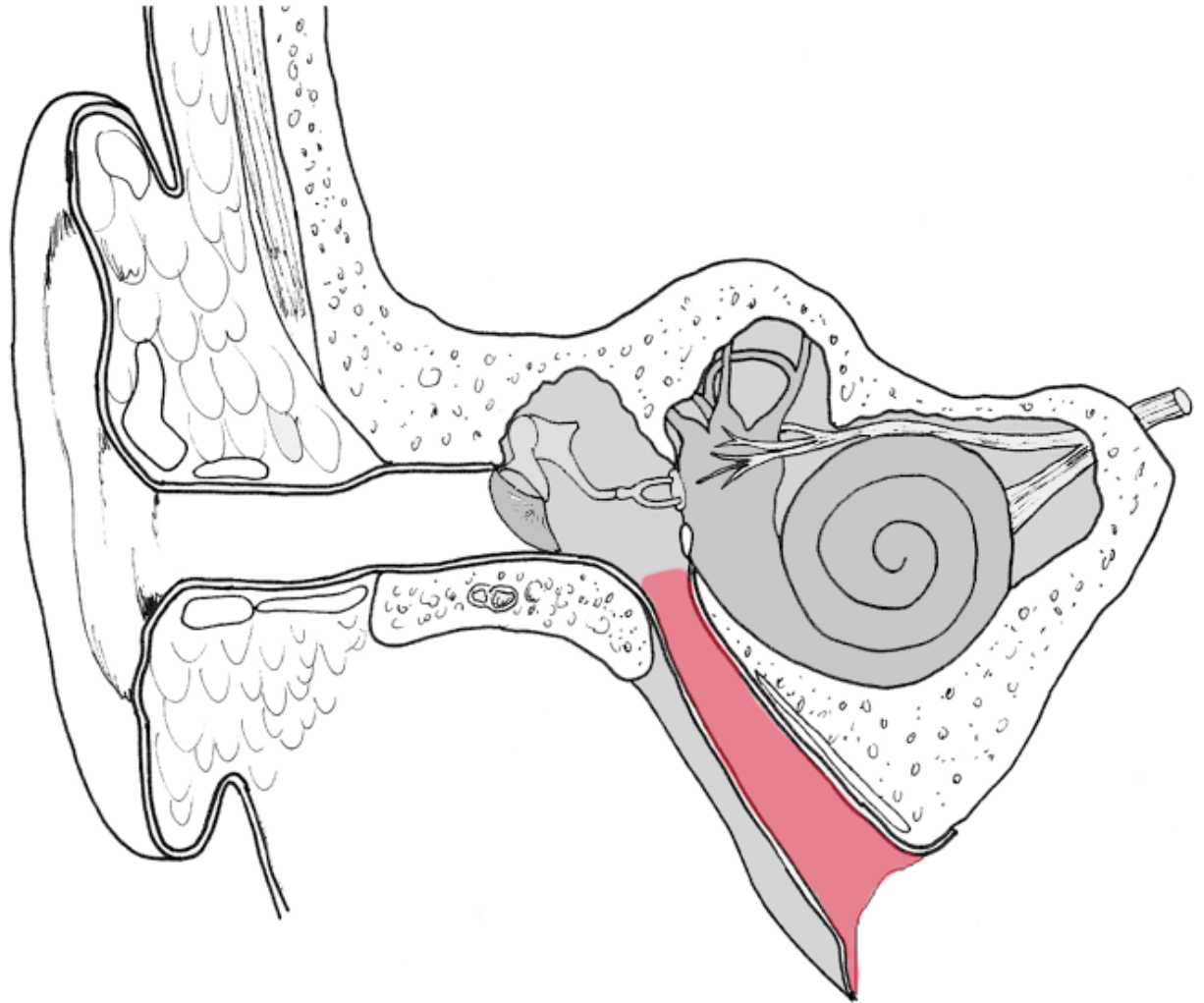
Vestibular window

Cochlear window

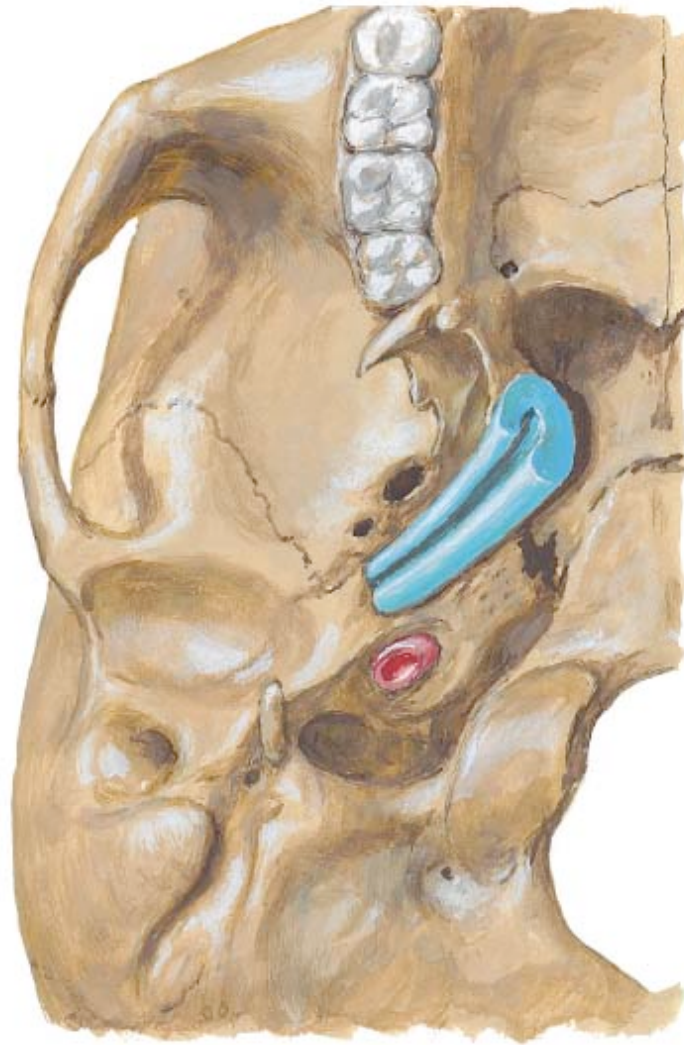


Middle Ear

Auditory (pharyngotympanic/Eustachian) tube



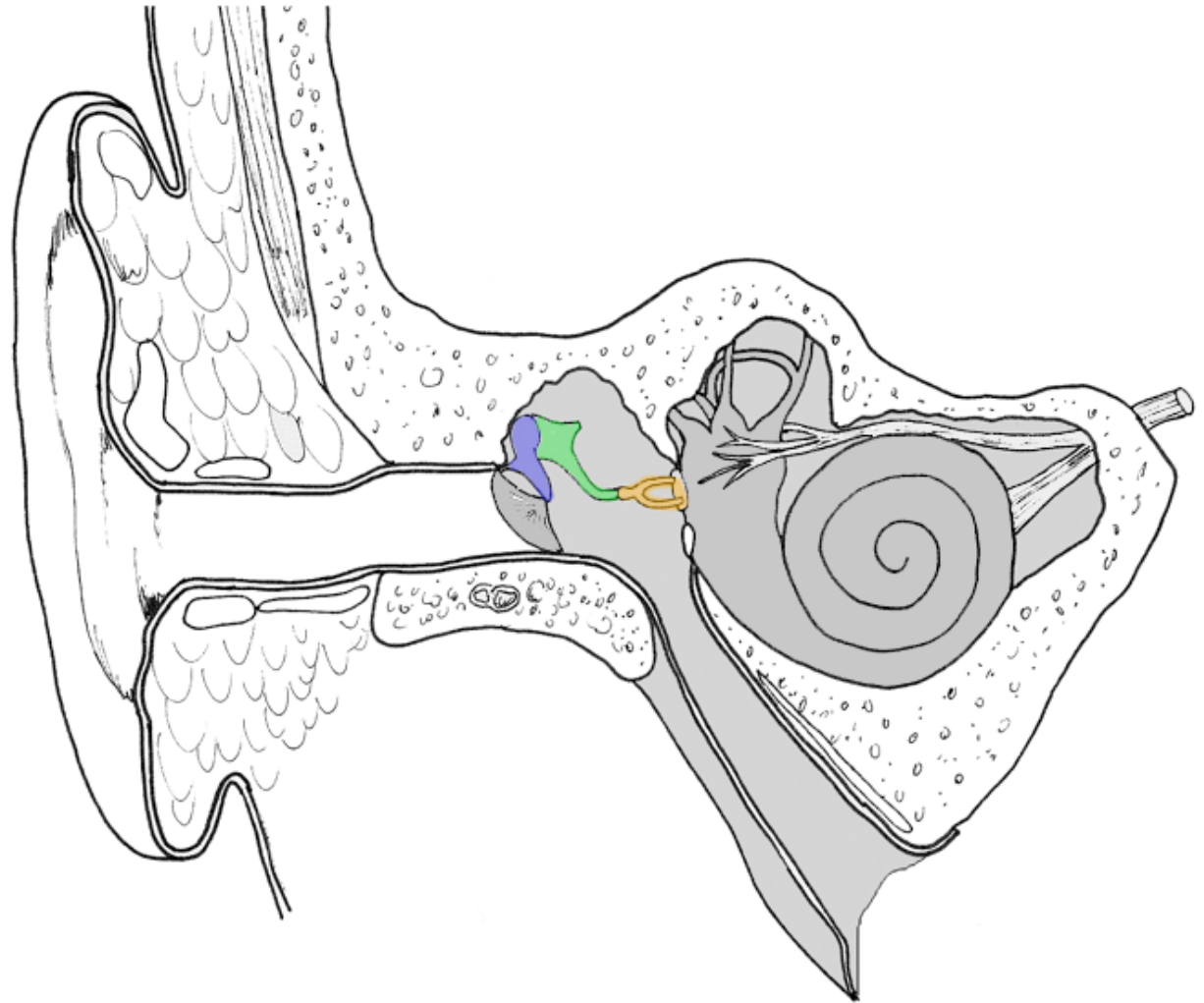
Pharyngotympanic (Auditory) Tube
Cartilaginous Portion on Skull Base - Inferior View

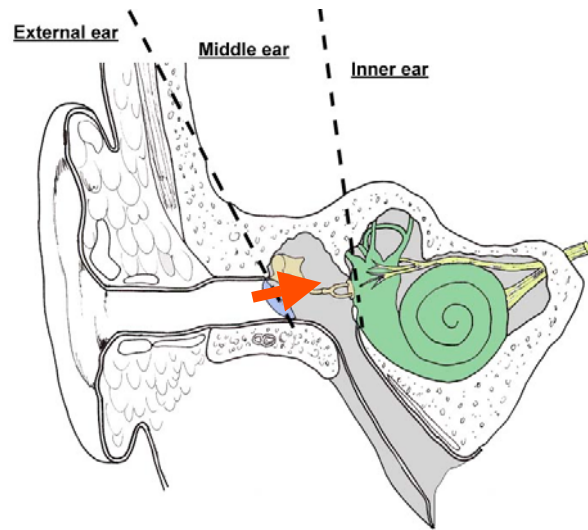


Middle Ear

Ossicles

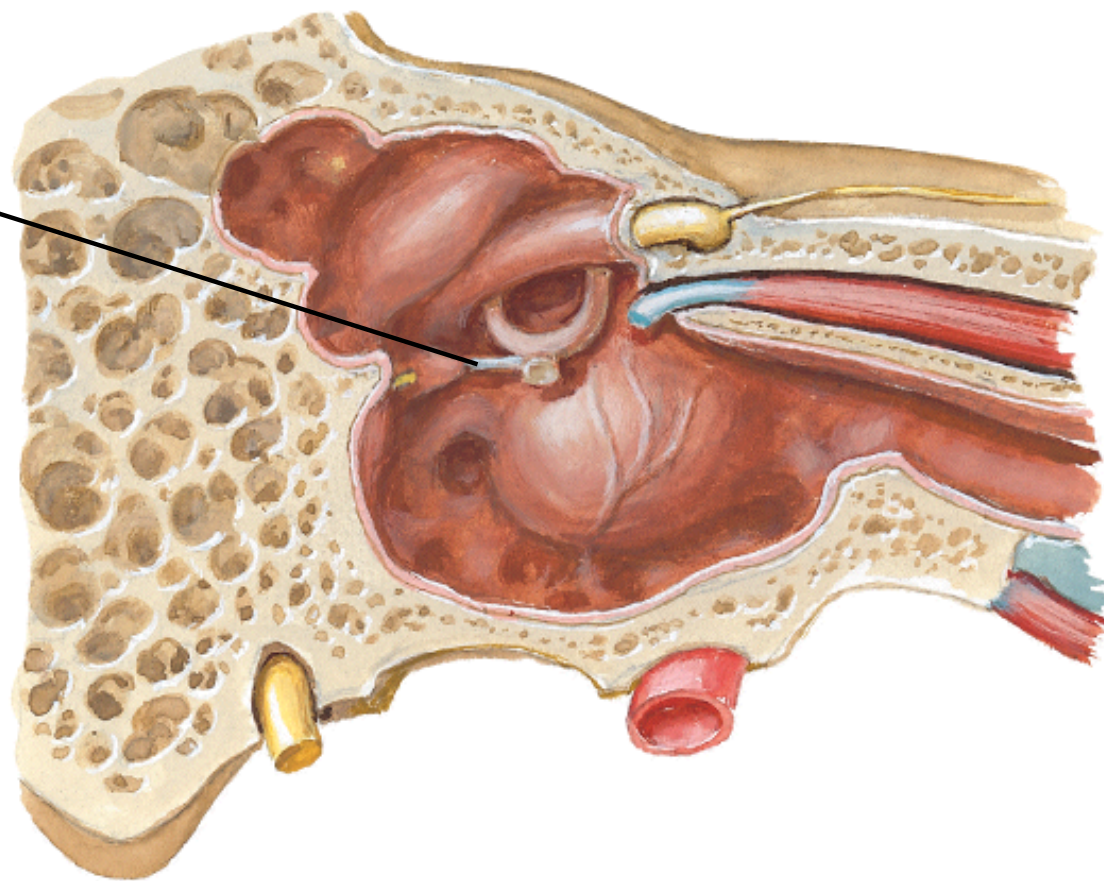
- Malleus
- Incus
- Stapes





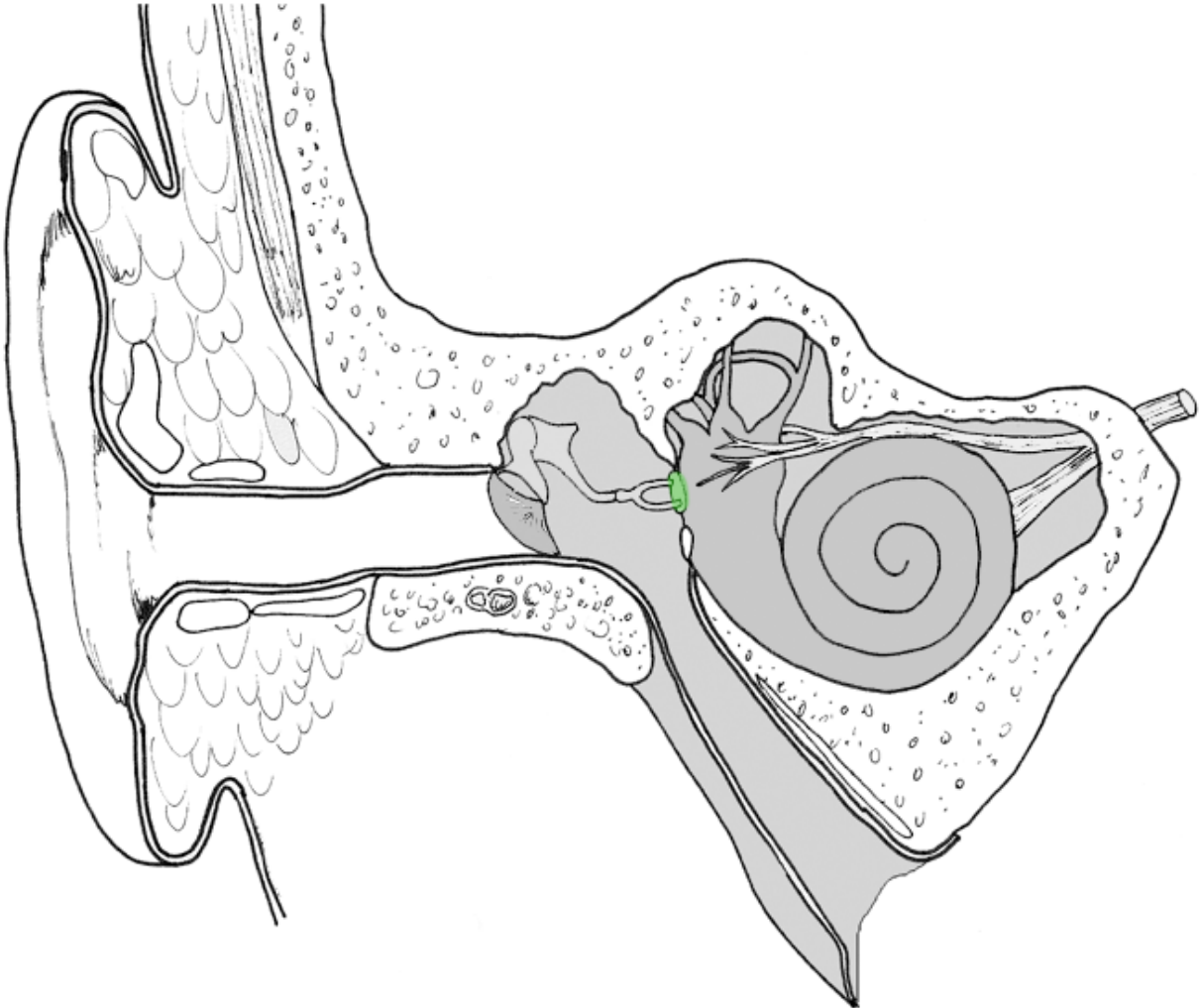
Tympanic Cavity - Medial Wall Lateral View

Stapedius m.

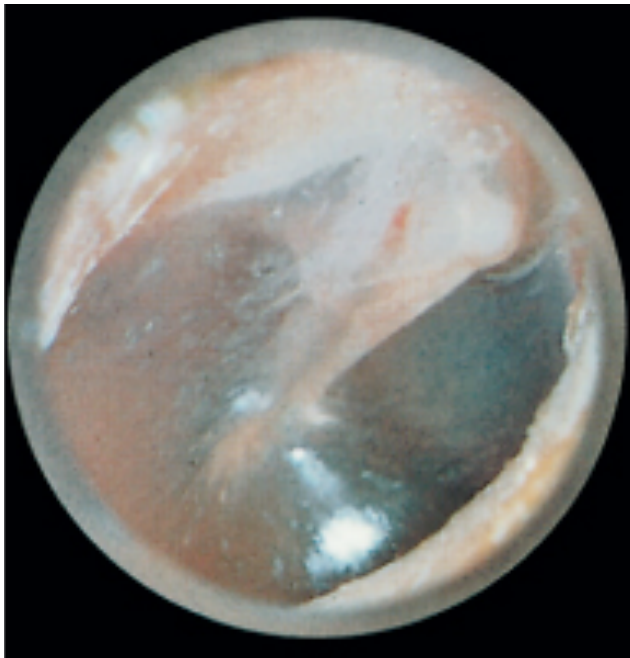
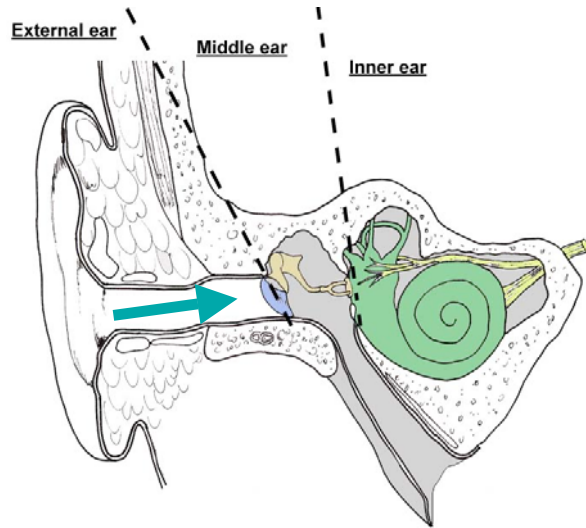


Middle Ear

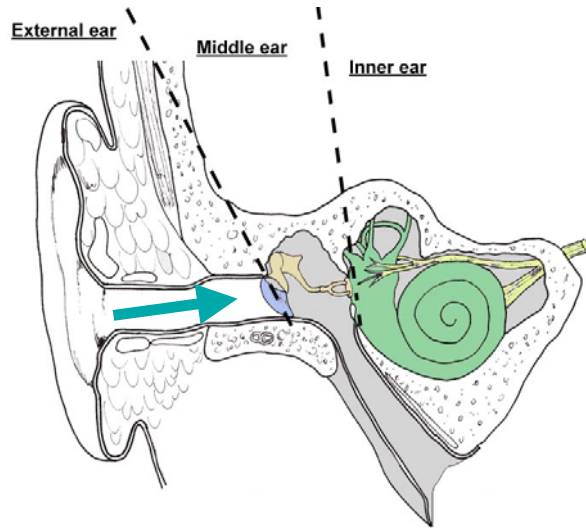
Vestibular (oval) window



External Ear: Right Tympanic Membrane Viewed Through Speculum

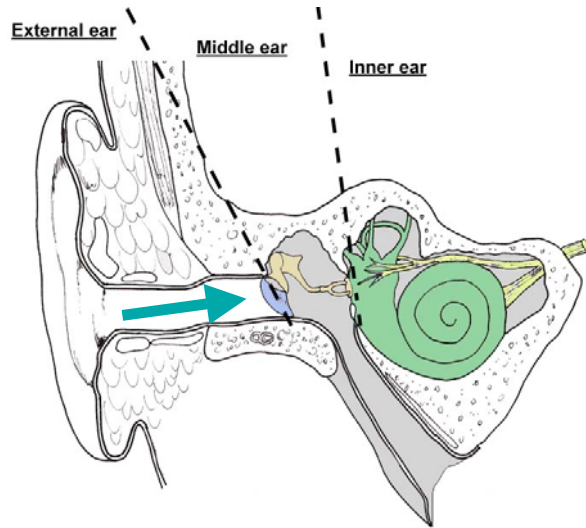


External Ear: Right Tympanic Membrane Viewed Through Speculum

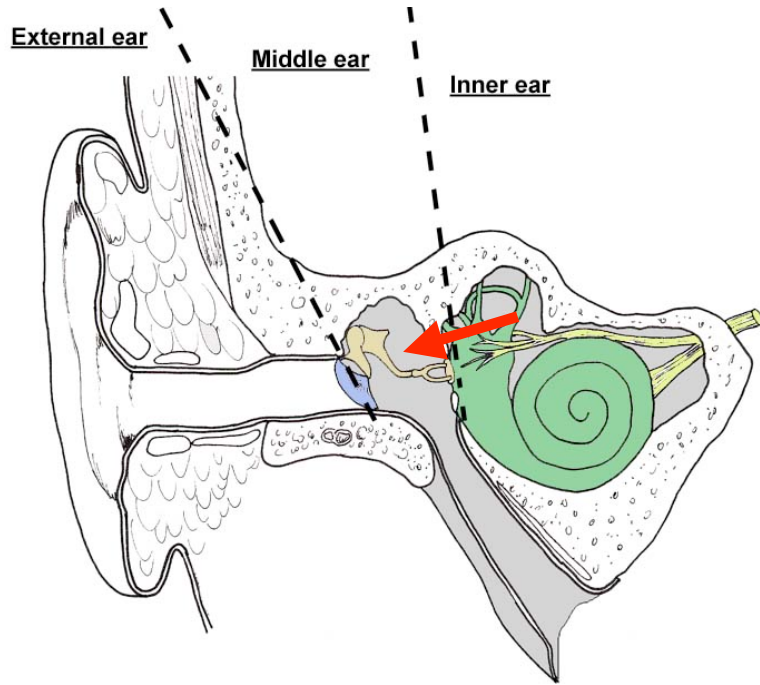


Tympanic Cavity

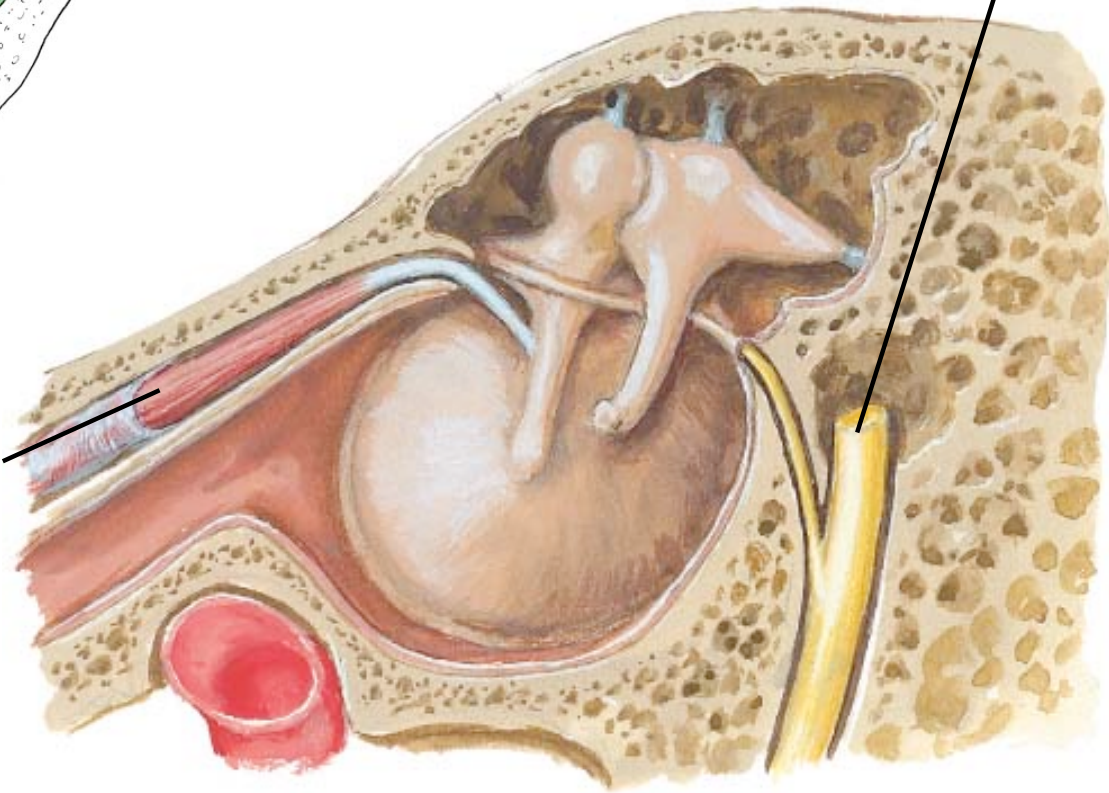
Viewed from External Acoustic Meatus



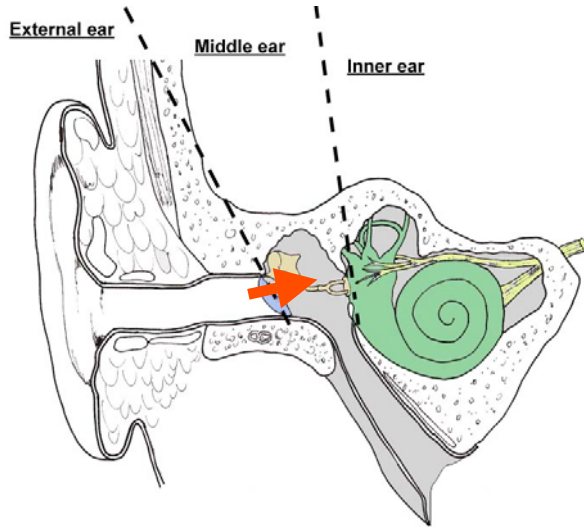
Tympanic Cavity - Lateral Wall Medial View



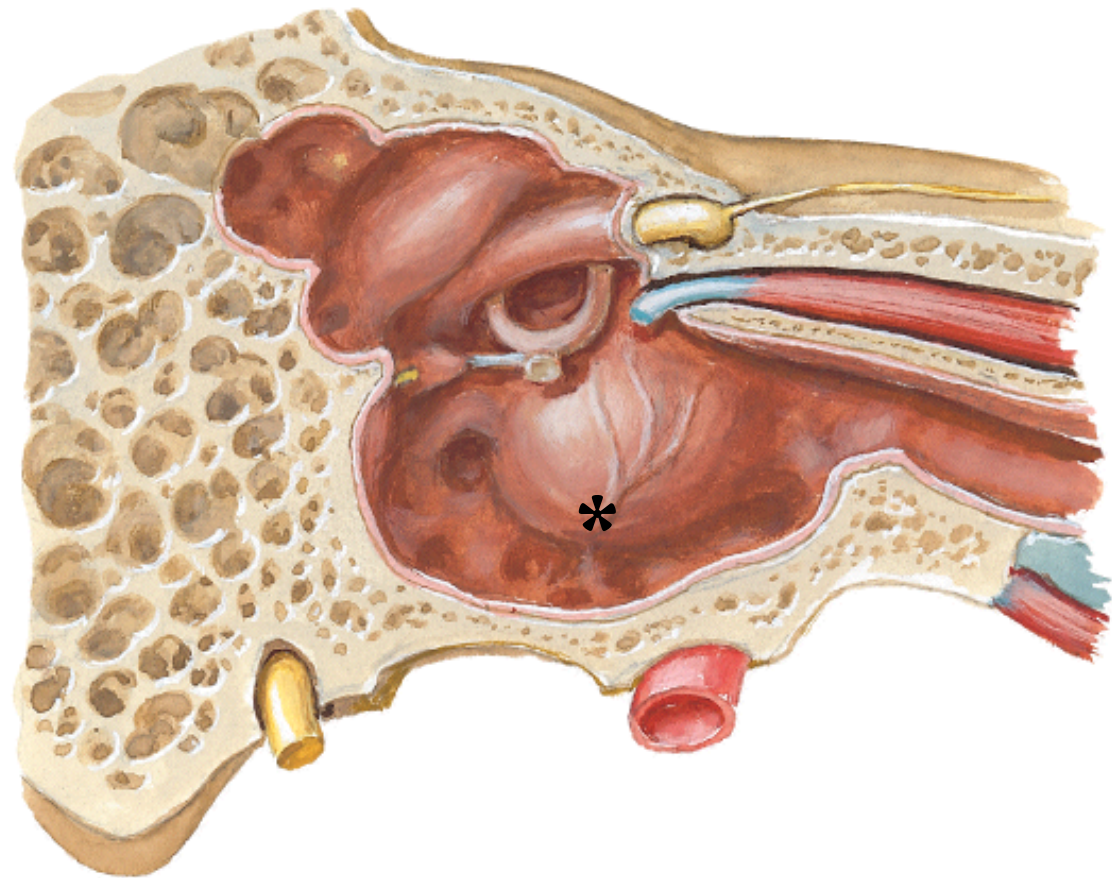
Identify this nerve?



Identify this muscle?



Tympanic Cavity - Medial Wall
Lateral View



A lesion in this nerve (*) would result in:

- A. Alteration in taste
- B. Decrease in parotid gland activity
- C. Decrease in Submandibular gland activity
- D. Ringing in the ears

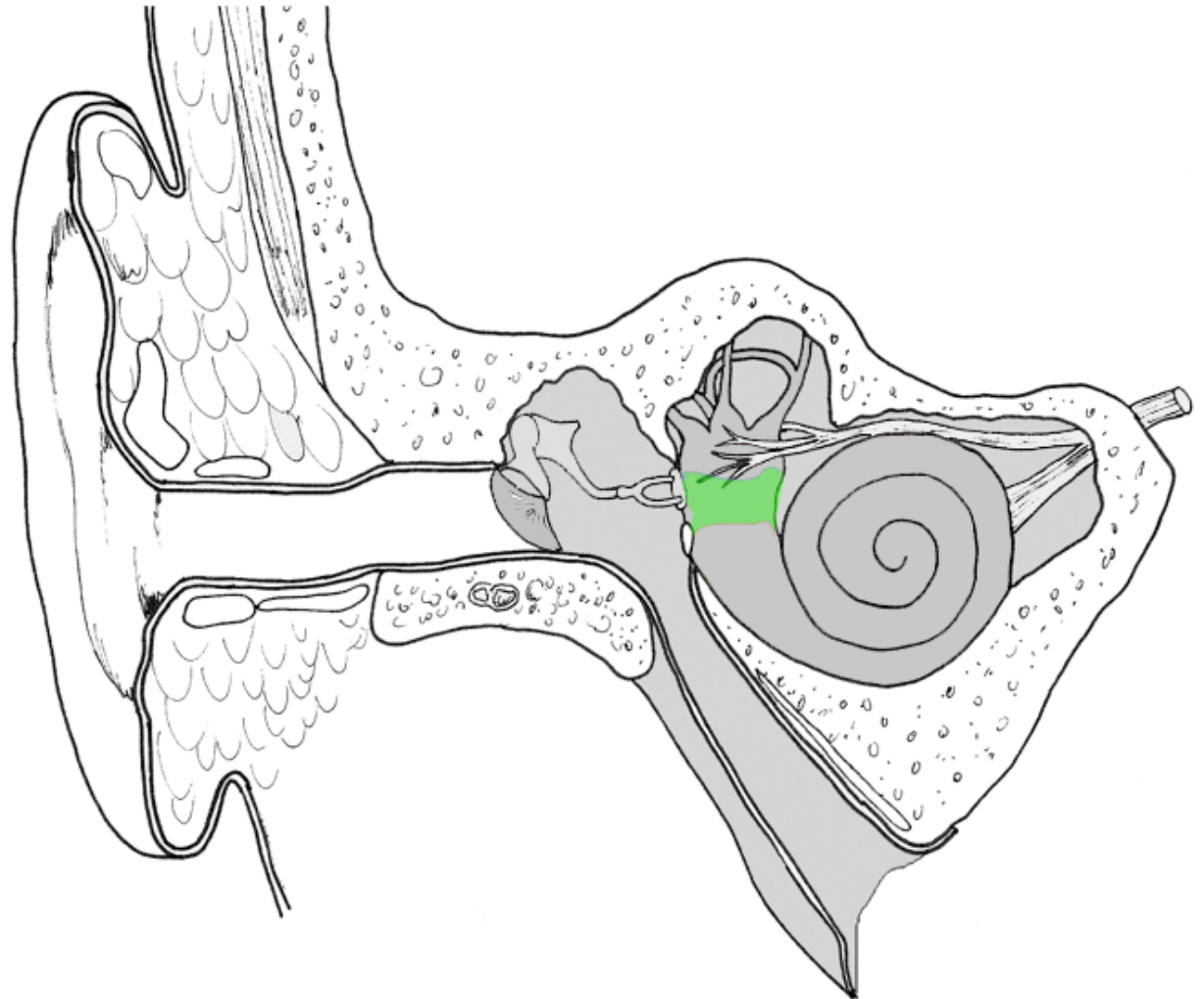
Internal Ear

Vestibule

Cochlea

Semicircular canals

CN VIII



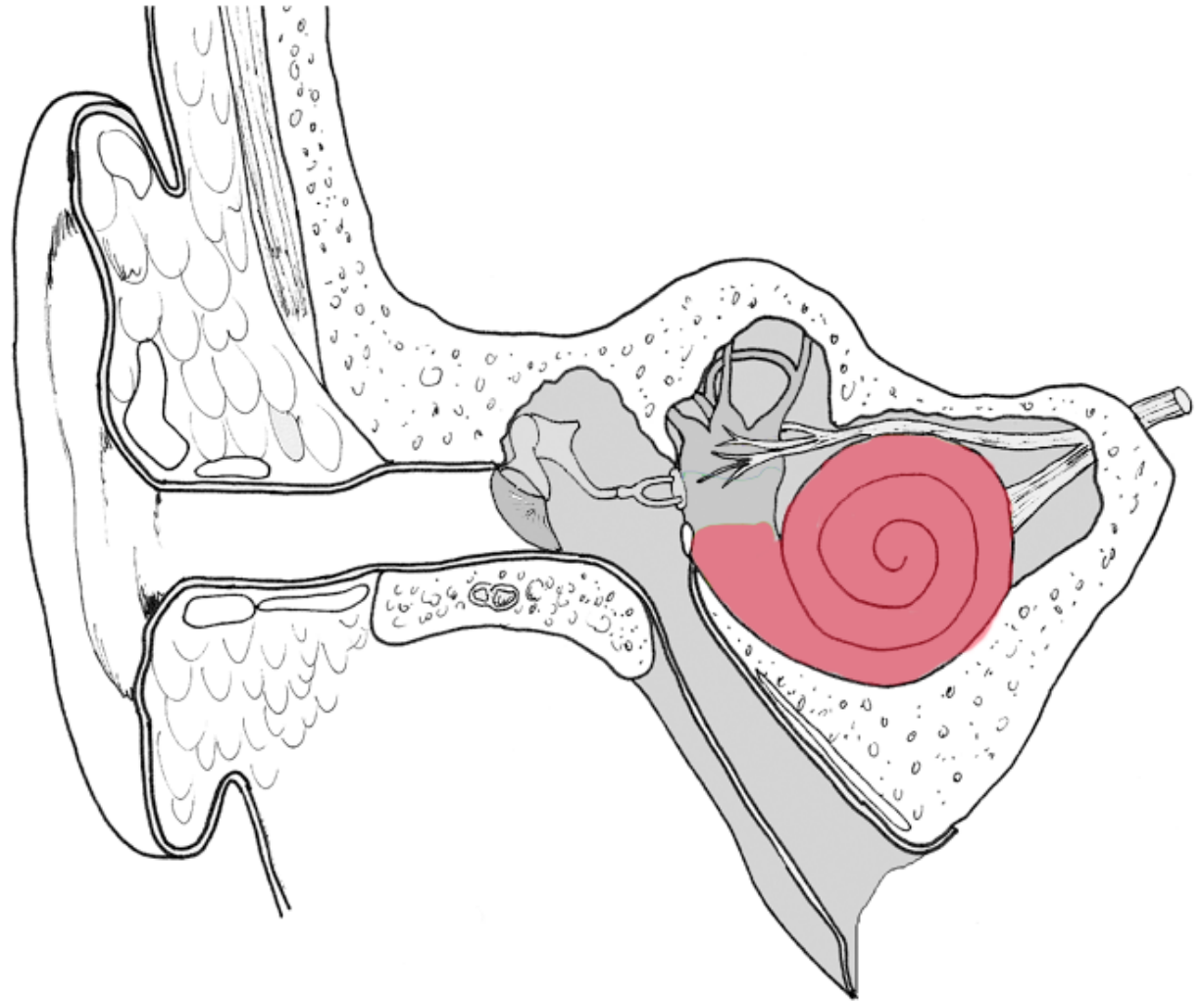
Internal Ear

Vestibule

Cochlea

Semicircular canals

CN VIII



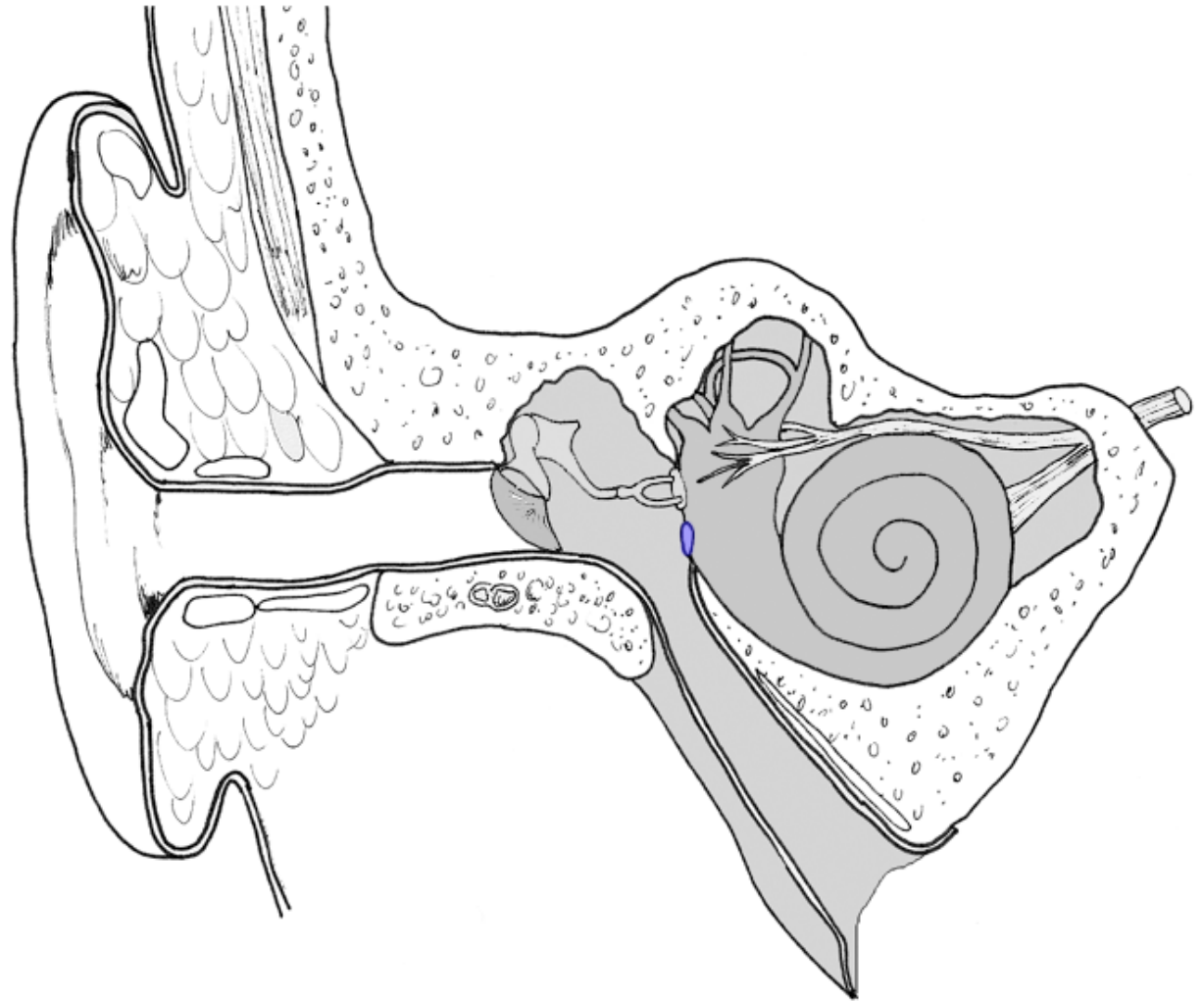
Internal Ear

Vestibule

Cochlea (round/cochlear window)

Semicircular canals

CN VIII



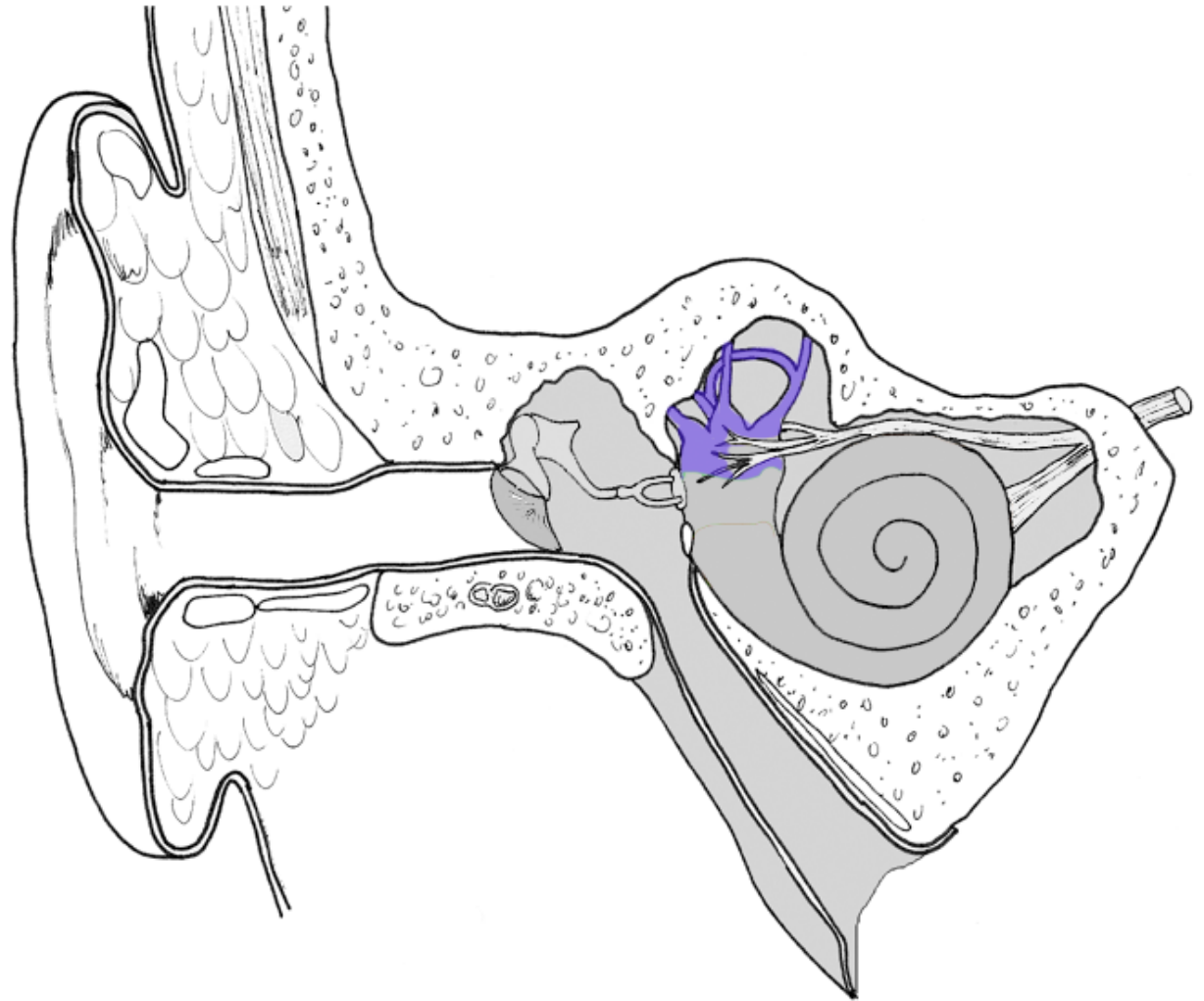
Internal Ear

Vestibule

Cochlea

Semicircular canals

CN VIII



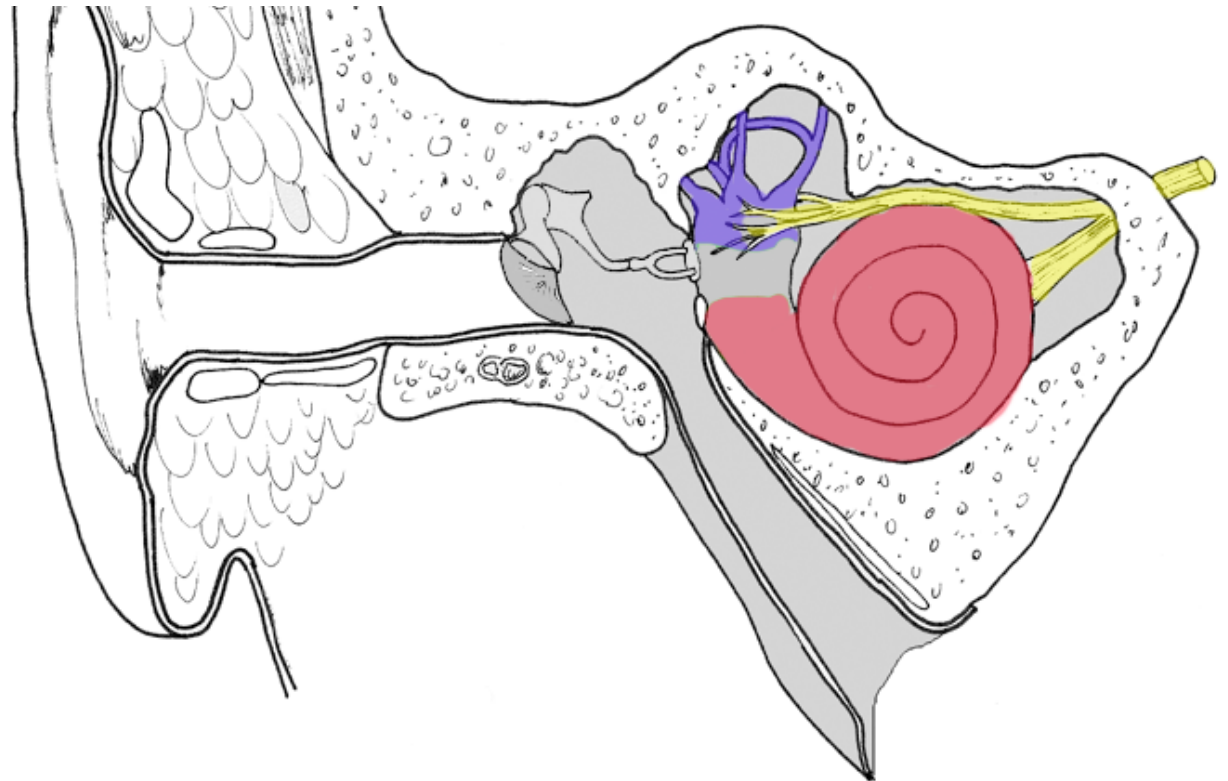
Internal Ear

Vestibule

Cochlea

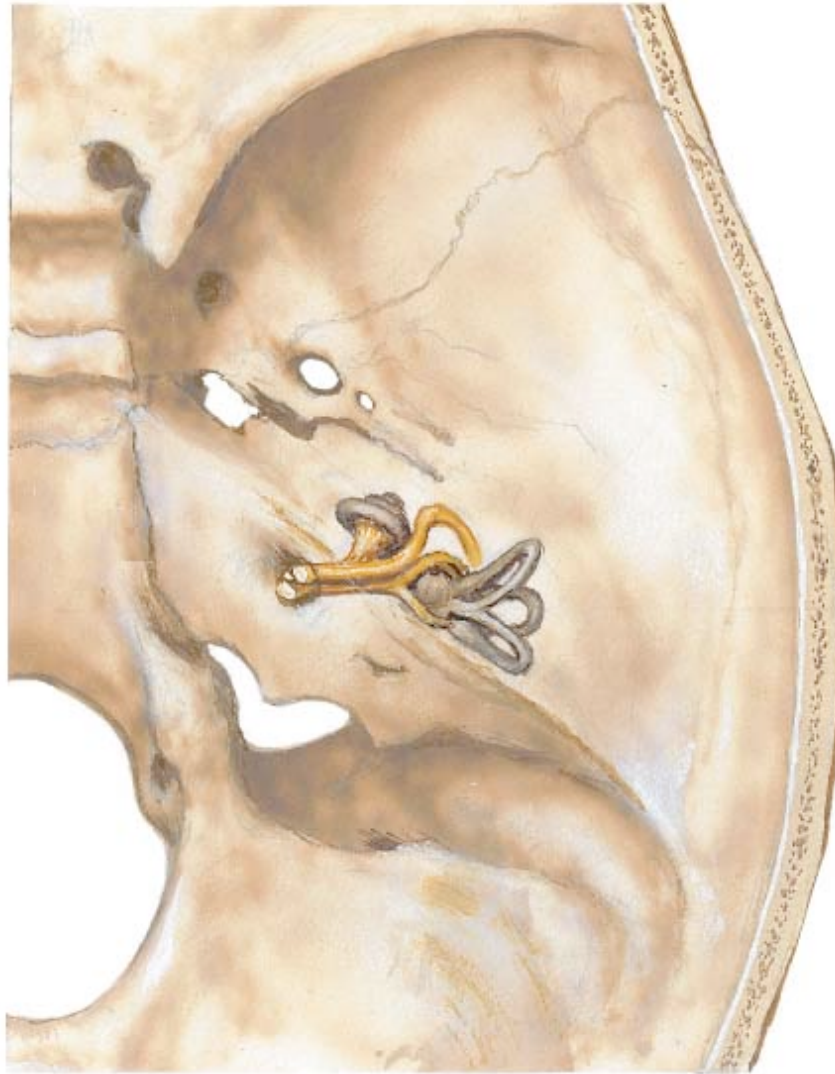
Semicircular canals

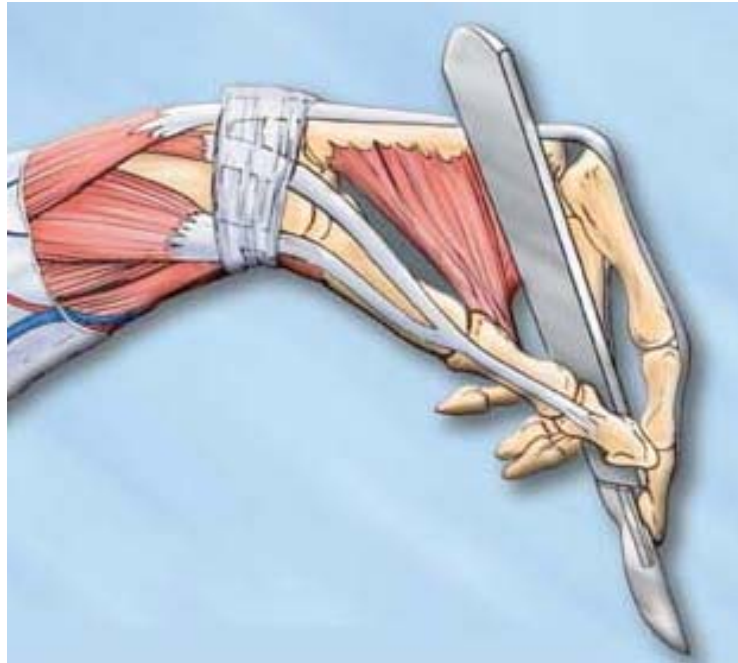
CN VIII (vestibulocochlear nerve)



Orientation of Labyrinth in Skull

Superior Projection





THANK-YOU